

EASY STACKER GRIPPER

PRODUCTS & ACCESSORIES

TIRE HANDLING EQUIPMENT



AME International
North and Central American Importer



www.ameintl.net

EASY GRIPPER SERIES

EASY GRIPPER SERIES OTR TIRE HANDLER



SCAN QR
FOR VIDEO!



Specifications:

- Standard 3 gripper pipes: 3.5 x 23.6 inches (89 x 600 mm)
- Longer gripper pipes and telescopic gripper pipes can be acquired as accessories
- Supply voltage: 12 V (24 V by order)
- Hydraulic requirement: minimum 100 bar (flow 70 l/min)
- One double-acting hydraulic connection
- Remote control included to operate the 2 or 3 functions (Gripper Compact has no tilt function. It is therefore suited for use on a loader with tilt function)
- Lifting height depends on forklift/loader
- Horizontal/vertical tilt movement: 0 – 90 degrees (Gripper 2160)
- Rotation: 0 – 50 degrees
- Quick shift between Gripper and forks
- Transport dimensions: 47 x 59 inches (1,200 x 1,500 mm)
- Height: 47 inches (1,200 mm)

EASY GRIPPER MODEL TECHNICAL DATA

MODEL	LIFTING CAPACITY	GRIPPING CAPACITY	COMPATIBLE ACCESSORIES	WEIGHT
#94060 EASY GRIPPER 2160	2,200 lbs (1,000 kg)	47-85" (1200-2160 mm)	<ul style="list-style-type: none"> • Quick Shift Mounting Plate • Quick Shift Mounting Plate • Hydraulic Quick Shift • Telescopic Arms (for 2-Tire gripping) 	1,200 lbs (550 kg)
#94062 EASY GRIPPER 2400-2T	4,410 lbs (2,000 kg)	44-94" (1100-2400 mm)	<ul style="list-style-type: none"> • Flat arms for narrow fenders • Forklift Module (for use with Quick Shift Mounting Plate) 	1,015 lbs (460 kg)

EASY GRIPPER SERIES

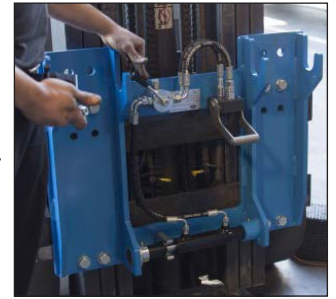
FUNCTIONALITY



ACCESSORIES

QUICK SHIFT MOUNTING PLATE

Install the Quick Shift Mounting Plate directly onto forklifts, mini-loaders, telescope loaders, and/or other front loaders for the most flexible and efficient operation of the Easy Gripper and Stacker products. Ensure a quick change between forks, Gripper, Stacker, and other accessories. Compatible with Gripper Model #94060.



REMOTE CONTROL

Easy Gripper and Stacker products are equipped with a compact remote control that can be mounted anywhere within the operating cab. The remote ensures simple and safe operation. A bright LED light illuminates the different operation features depending upon the Just Easy product. Only one hydraulic channel is necessary for installation.



CAMERA KIT

Precision Camera Kit. Ensures good monitoring of the blind area in front of the loaded forklift. Equipped with night-vision for precision alignment during all service hours and conditions. Built-in IR bulb automatically turns on in areas of insufficient lighting for use in the night and underground.

7" High -Res Screen Camera Kit



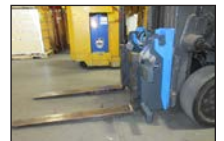
HYDRAULIC QUICK-SHIFT CONNECTION

Safely connect and disconnect the hydraulics in one easy operation.



FORKLIFT MODULE

Install the Quick Shift Accessory for flexible functionality to interchange the Gripper, Stacker, and forks. The Forklift Module is a flexible solution that allows the operator to change functions from forks to Easy Gripper within minutes!



SPECIALTY GRIPPER PIPES

For various purposes, special gripper pipes can be fitted onto your Gripper:

- Flat Top Gripper
- Telescopic Gripper
- Custom length Gripper Pipes
- Contact your sales rep for more information



Professional Installation and Training Available. Please contact an AME sales rep for more information.

EASY STACKER



#94100 EASY STACKER SERIES TIRE STACKER



SCAN QR
FOR VIDEO!

Technical Data:

- #94100 Easy Stacker - standard.
- Lifting capacity: 1,653.47 lb (750 kg).
- Gripping diameter on tires: 19.7"- 47.2"
(500-1,200 mm).
- Grip length: 82.7" (2,100 mm).
- Adjustable gripping force max.: 2,204.6 lb (1,000 kg).
- Supply voltage 12V. (possibly 24V)
- Hydraulics supply 100 bar. Preferably 3/8" Hose.
- Lifting height depends on forklift/loader.
- Horizontal/Vertical. 0-90 degrees.
- Quick switching on forklift/loader.
- Net weight: 1388.9 lb (630 kg).

EASY STACKER

FUNCTIONALITY



ACCESSORIES

QUICK SHIFT MOUNTING PLATE

Install the Quick Shift Mounting Plate directly onto forklifts, mini-loaders, telescope loaders, and/or other front loaders for the most flexible and efficient operation of the Easy Gripper and Stacker products. Ensure a quick change between forks, Gripper, Stacker, and other accessories. Compatible with Gripper Model #94060.



REMOTE CONTROL

Easy Gripper and Stacker products are equipped with a compact remote control that can be mounted anywhere within the operating cab. The remote ensures simple and safe operation. A bright LED light illuminates the different operation features depending upon the Just Easy product. Only one hydraulic channel is necessary for installation.



HYDRAULIC QUICK-SHIFT CONNECTION

Safely connect and disconnect the hydraulics in one easy operation.



FORKLIFT MODULE

Install the Quick Shift Accessory for flexible functionality to interchange the Gripper, Stacker, and forks. The Forklift Module is a flexible solution that allows the operator to change functions from forks to Easy Gripper within minutes!



Professional Installation and Training Available.
Please contact an AME sales rep for more information.



EASY GRIPPER COMPACT



#94095

EASY GRIPPER COMPACT COMPACT TIRE HANDLER

Technical Data:

- Lifting capacity: 2,000 lbs (1,000 kg)
- Gripping diameter: 47.3 – 85 inches (1,200 – 2,160 mm)
- Tire width with standard gripper pipes: 40 inches (1,000 mm)
- Longer gripper pipes and telescopic gripper pipes can be acquired as accessories
- As standard includes 3 gripper pipes: 3.5 x 23.6 inches (89 x 600 mm)
- Supply voltage: 12 V (24 V by order)
- Hydraulic requirement: minimum 100 bar (flow 70 l/min)
- One double-acting hydraulic connection
- Remote control included to operate the 2 or 3 functions (**Gripper Compact has no tilt function. Is therefore suited for use on a loader with tilt function**).
- Lifting height depends on forklift/loader
- Horizontal/vertical tilt movement: 0 – 90 degrees (Gripper 2160)
- Rotation: 0 – 50 degrees
- Quick shift between Gripper and forks
- Net weight Gripper 2160: about 1,200 lbs (550 kg)
- Net weight Gripper Compact: about 1,100 lbs (400 kg)
- Transport dimensions 47 x 59 inches (1,200 x 1,500 mm), height 47 inches (1,200 mm)

Easy Gripper Compact shown on a loader with tilt function



SCAN QR
FOR VIDEO!

EASY GRIPPER CRANE MODULE



EASY GRIPPER CRANE MODULE SERVICE TRUCK TIRE HANDLER



SCAN QR
FOR VIDEO!



Technical Data:

- Handles both the Easy Gripper 2160 and the Easy Gripper 2400-2T
- Tilt function 160° vertical tilt
- Precise rotation function 0-50°
- Pushing force up to: 4400 lbs (2000 kg)
- Weight of Crane module: 770 lbs (350 kg)
- All Grippers are delivered with wireless camera system as standard
- Variety of Gripping arms for various purposes available for all Grippers
- Control System can be build-in in most existing crane control systems

EASY GRIPPER WORKSHOP WORKSHOP TIRE HANDLER

Technical Data:

- Lifting capacity: 2200 lbs (1000 kg)
- Gripping diameter: 47.3 – 85 inch (1200 mm – 2160 mm)
- ± 15° tilt from vertical position
- 50° rotation
- Pushing force: 2200 lbs (1000 kg)
- Width of stacker truck: 63 inch (1600 mm)
- Minimum turning radius: 60 inch (1530 mm)



3-Point Grip

The unique 3 point grip, offers both safety and full control



NEW!



SCAN QR
FOR VIDEO!

Easy accessible controls
Controls for moving and gripping tires are simple and easy.





By



MADE IN DENMARK 
 LOVED IN AMERICA

www.ameintl.net
352.799.1111
2347 Circuit Way, Brooksville, FL 34604