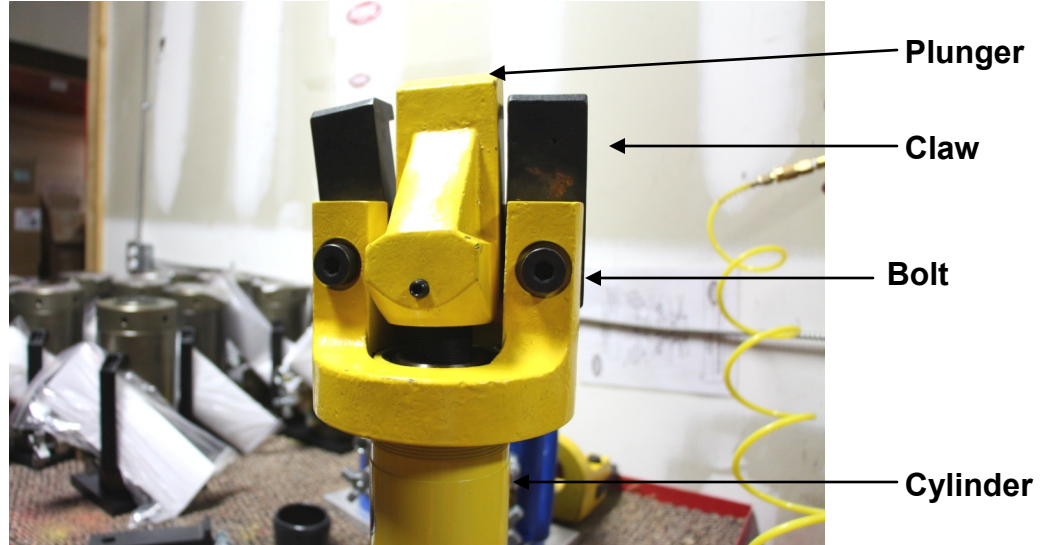
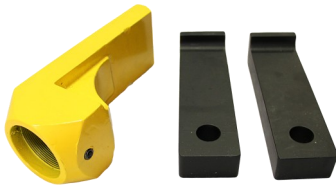




INSTRUCTION MANUAL

Part # 16270

HOW TO INSTALL 16270 CONVERSION KIT

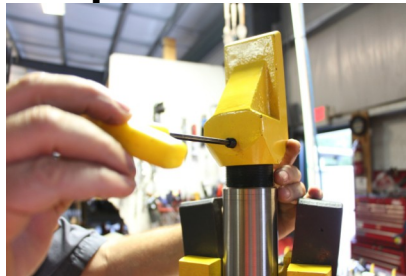


Step 1



Fully extend the piston.

Step 2



Remove set screw in order to remove the plunger.

Step 3



After removing the old plunger, confirm the threaded adapter is fully threaded into the piston.

Step 4



Thread on new plunger, tighten set screw, then retract the piston.

Step 5



Remove bolt with 3/8" allen wrench and 15/16" wrench for nut. Remove old claw and install longer claw. Re-tighten bolt. Repeat for the other side.

2347 Circuit Way, Brooksville, Florida, USA 34604
Phone: (+1) 352-799-1111 Toll Phone: (+1) 877-775-4AME (4263)
Fax: (+1) 352-799-1112 E-mail: sales@ameintl.net www.ameintl.net