



GRIP-IT SERIES JACK PLATES

14500 14501 14502 14503

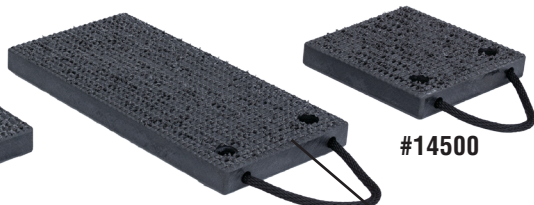
Grip-It Series Jack Plates (14500 14501 14502 14503)

- Redesigned to mate with Super Stacker Cribbing blocks for secure, exact fit
- Provides increased stability and gripping-surface
- New pyramid-locking surface grips uneven terrain in the field
- Locking feature prevents the release of hazardous energy by mechanically locking load

OSHA® Complies with OSHA regulation 29 CFR 1926.305, "When it is necessary to provide a firm foundation, the base of the jack shall be blocked or cribbed."



#14502



#14501

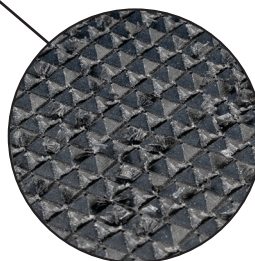
#14500



#14503

**LOCKS ON
ONE SIDE &
GRIPS ON THE
OTHER!**

Model	Capacity	Type	Length	Width	Height	Weight
14500	100 Tons	Flat	12 in (305 mm)	12 in (305 mm)	2 in (51 mm)	8.8 lbs (4 kg)
14501	100 Tons	Flat	12 in (305 mm)	24 in (607 mm)	2 in (51 mm)	17.8 lbs (8.1 kg)
14502	100 Tons	Flat	24 in (607 mm)	24 in (607 mm)	2 in (51 mm)	36.3 lbs (16.5 kg)
14503	100 Tons	Locking	27 in (686 mm)	24 in (607 mm)	2 in (51 mm)	38.4 lbs (17.5 kg)



**NEW PYRAMID
SURFACE FOR
MAXIMUM
STABILITY**

2347 Circuit Way
Brooksville, FL 34604
352.799.1111 - sales@ameintl.net

