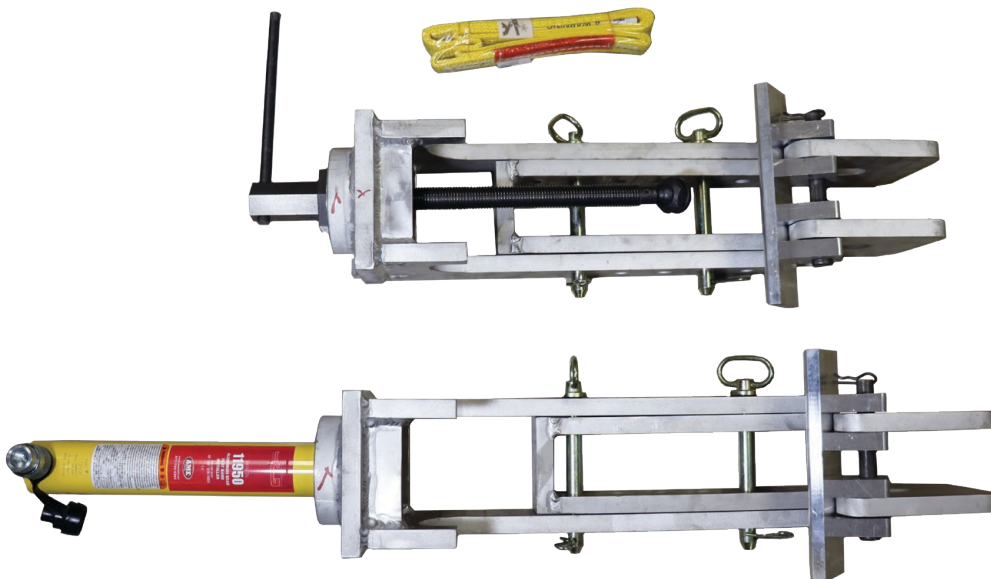




INSTRUCTION MANUAL

#11950 BEAD SEAT BAND INSTALLER FOR 49" - 63" OTR TIRES



WARNING!

To avoid serious personal injury, always wear proper protective gear, such as hard hats, safety glasses, gloves, and steel toe shoes when using hydraulic equipment. Failure to chock the wheels and crib the vehicle can result in serious injury or death. Always deflate tires before removing a wheel, a rim, or part of a rim clamp or nut. If you do not deflate the tire, the tire could explode, causing serious injury or death.

Always be mindful of your surroundings when handling the Bead Seat Band installer.

Important Receiving Information

Visually inspect all parts for shipping damage. If you find shipping damage, notify the carrier at once. Shipping damage is not covered by your warranty. The carrier is responsible for all costs of replacement or repair caused by shipping damage.

Description

The Bead Seat Band Installer installs bead seat bands safely, efficiently, and effortlessly. It is designed for horizontal mounting of tire and rim components. This tool adjusts to accommodate 49" - 63" OTR tires and works on biased and radial tires. It also reduces chances of bead seat band separation during the vertical mounting process.

Safety Information

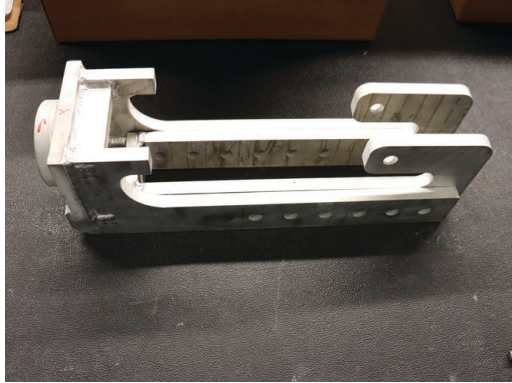
To avoid injury or property damage while using this product, read and follow all DANGERS, WARNINGS, CAUTIONS, and INSTRUCTIONS that are attached to, or included with, this product. These instructions do not apply to any specific bead band. If confused about the procedures listed in this instruction manual, please contact AME International for assistance. AME international cannot be held responsible for damage or injury resulting from unsafe use of this product, lack of maintenance, or incorrect product and system application. Contact AME International when in doubt about safety precautions or applications.

Assembly Instructions | BOX 1 Clamp Assembly

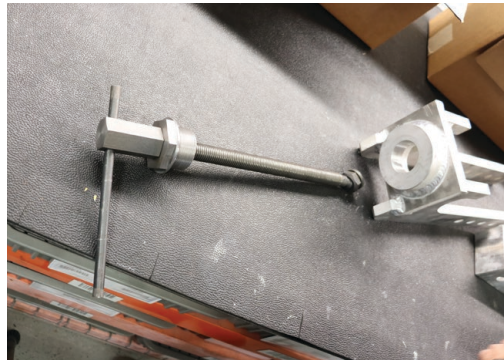
1. Remove all off the contents from the box. Refer to Parts Breakdown to identify all parts are present.



Step 1



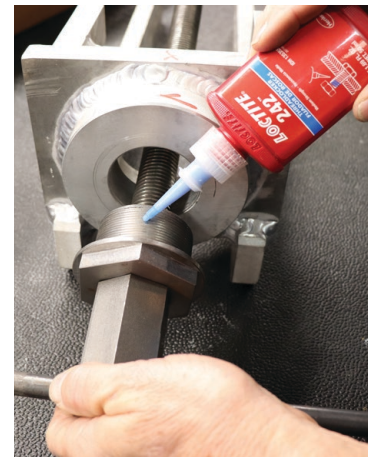
Step 1



Step 2



Step 2

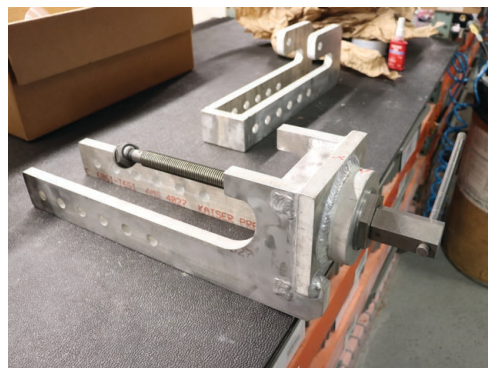


Step 3

2. Take Manual Screw T-Handle (Part #8) and slide in through hole in the front of the Threaded Frame (Part #6B)
3. Apply a small amount of Loctite Blue 242 to the threading on the T-Handle's threading to keep assembly secure and prevent vibration during use.
4. Tighten down with wrench or by hand until Adapter Nut (Part #7) is snug.



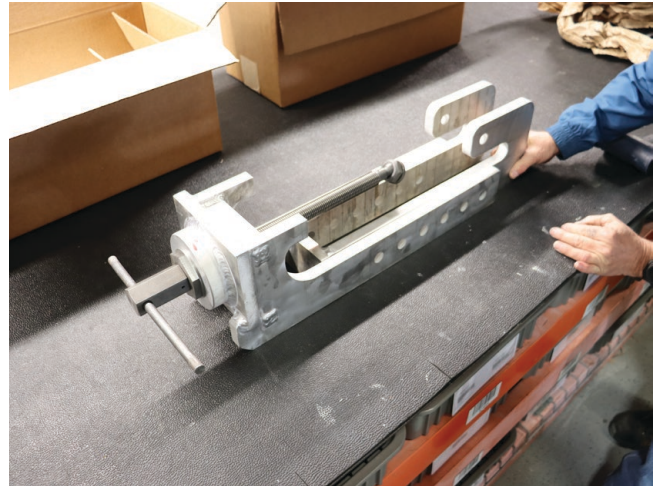
Step 4



Step 4



Step 5

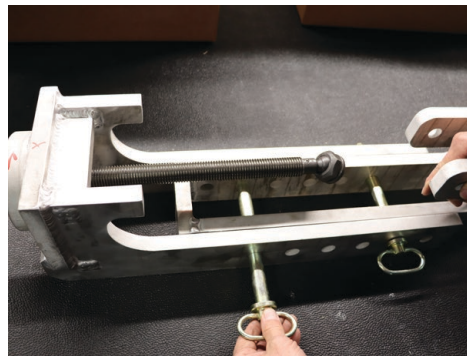


Step 5

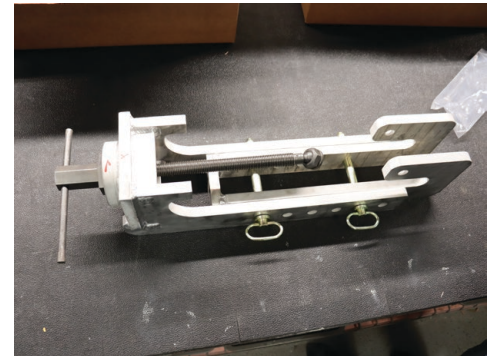
5. Insert the Bead Plate Support (Part #6A) in between the front end of the Threaded Frame (Part #6b). Move around until it is at desired length. Be sure holes are lined up.
6. Remove the Hitch Pins (Part #4) from the parts bag. Insert the pins into the two holes on the Bead Plate Support and the Threaded Frame that are furthest away from each other.
7. Use the Stainless Steel Cotter Pins (Part #5) to secure the Hitch Pins (Part #4) in place.



Step 6



Step 6



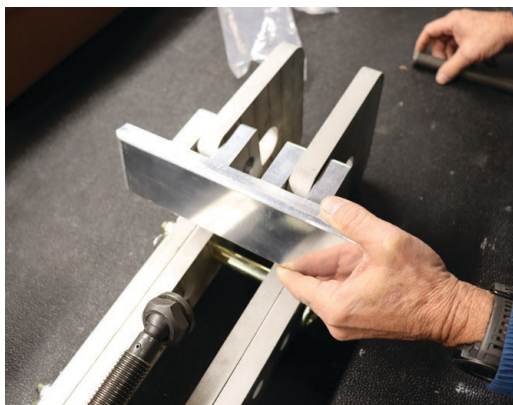
Step 6



Step 7



Step 7

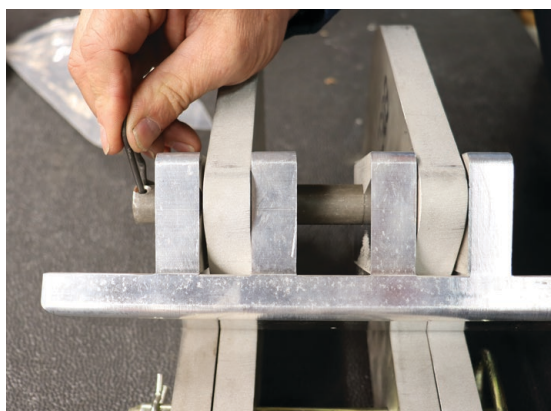


Step 8

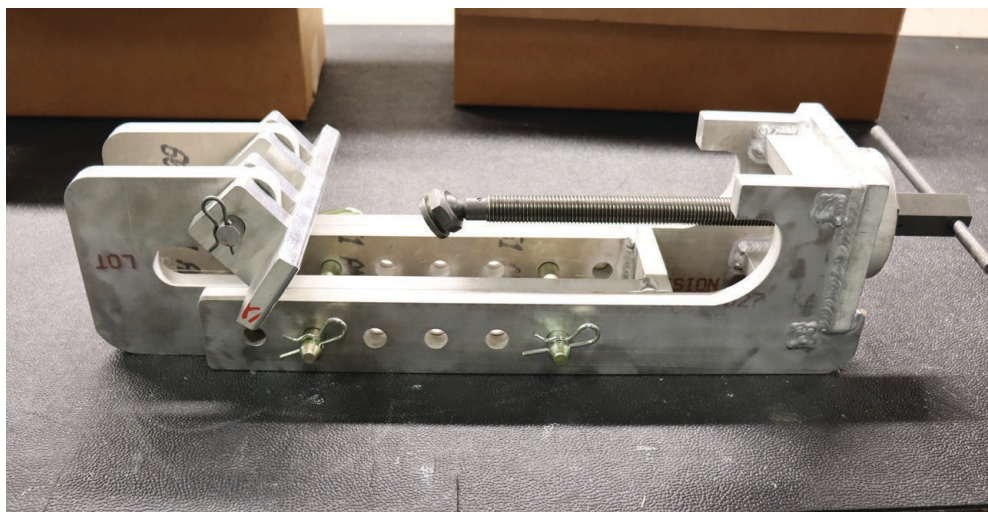


Step 8

8. Put the Tire Bead Plate (Part #11) onto the Bead Plate Support (Part #6A) with the front face of the Tire Bead Plate (Part #11) at an angle. Line up the holes and place the Clevis Pins (Part #2) through the holes of the Tire Bead Plate (Part #11)
9. Insert Stainless Steel Cotter Pin (Part #12) into the Clevis Pin (Part #2) to secure in place during use.



Step 9



Clamp Assembly Completed

1. Remove all off the contents from the box. Refer to Parts Breakdown to identify all parts are present.



2. Remove Rubber Cap covering threads on the Hydraulic Cylinder (Part #9).
3. Remove Cap on top of the Hydraulic Cylinder (Part #9). Remove Saddle by twisting out to expose threads.



A yellow and red AME welding torch is shown lying on a textured, grey surface. The torch has a black handle and a silver nozzle. The label on the torch includes the AME logo, the text "WELDING TORCH", "CE", "AME", "www.ameusa.com", "877-755-4243", and a "WARNING" section with safety instructions. The torch is positioned vertically, with the handle at the bottom and the nozzle at the top.

A close-up photograph showing a person's hand unscrewing the black, ribbed cap of a yellow thermos. The thermos has a silver-colored metal band around its middle. The background is a blurred wooden surface.

WWW.AMEINTL.NET

11950 INSTRUCTION MANUAL



4. Remove the Smooth Saddle (Part #10) from it's box and apply Loctite Blue 242 to the threads.
5. Insert the Smooth Saddle (Part #10) onto the top of the Hydraulic Cylinder and hand tight-en until snug.



Step 4



Step 5



Step 5

6. Insert the Hydraulic Cylinder (9) into the threaded hole on the Threaded Frame (6B). Apply a small amount of Loctite Blue 242 and hand tighten until seated.



Step 5



Step 5



Step 5



Push Assembly Complete

CAUTION!

BEFORE USING THIS TOOL, READ INSTRUCTIONS THOROUGHLY. THE USE OF THIS TOOL IN ANY OTHER APPLICATION IS BOTH A VOID OF WARRANTY AND CAN LEAD TO INJURY OR EVEN DEATH.

The Bead Seat Band Installer should only be used by persons properly trained according to OSHA regulation #29CFR19010

“Servicing Single-Piece & Multi-Piece Wheels.” Free copies of this regulation are available upon request from AME International

Operating Instructions

1. Lubricate the Wheel (See figure 1)
2. Prepare Bead Seat Installer and Outer Flange Ring for installation



Figure 1



Figure 2

3. **Adjust the bottom.** Remove the pins. Then adjust bottom of the Bead Seat Band Installer to the bottom of the bead seat. (Figure 3) After, reinstall pins. (Figure 4)
4. **Activate Bead Seat Band Installer to push bead seat band on tire bead.**



Figure 3



Figure 4

5. **Install Bead Band Holder** opposite of the Bead Seat Band Installer. Bead Seat Band Installer at 12 o'clock and bead band holder at 3 o'clock. (Figure 5)



Figure 5

6. **Rotate the Bead Seat Band Installer from 12 o'clock to 3 o'clock (Figure 6)** Then rotate the Bead Band Holder from 3 o'clock to 6 o'clock.

7. **Rotate the Bead Seat Band Installer again from 3 o'clock to 6 o'clock (Figure 6)** Then rotate the Bead Band Holder from 6 o'clock to 9 o'clock.
8. **Rotate the Bead Seat Band Installer again from 6 o'clock to 9 o'clock (Figure 6)** Then rotate the Bead Band Holder from 9 o'clock to 12 o'clock.
9. **Repeat all steps until BSB is depressed into the tire bead. (Figure 7)**



Figure 6



Figure 7

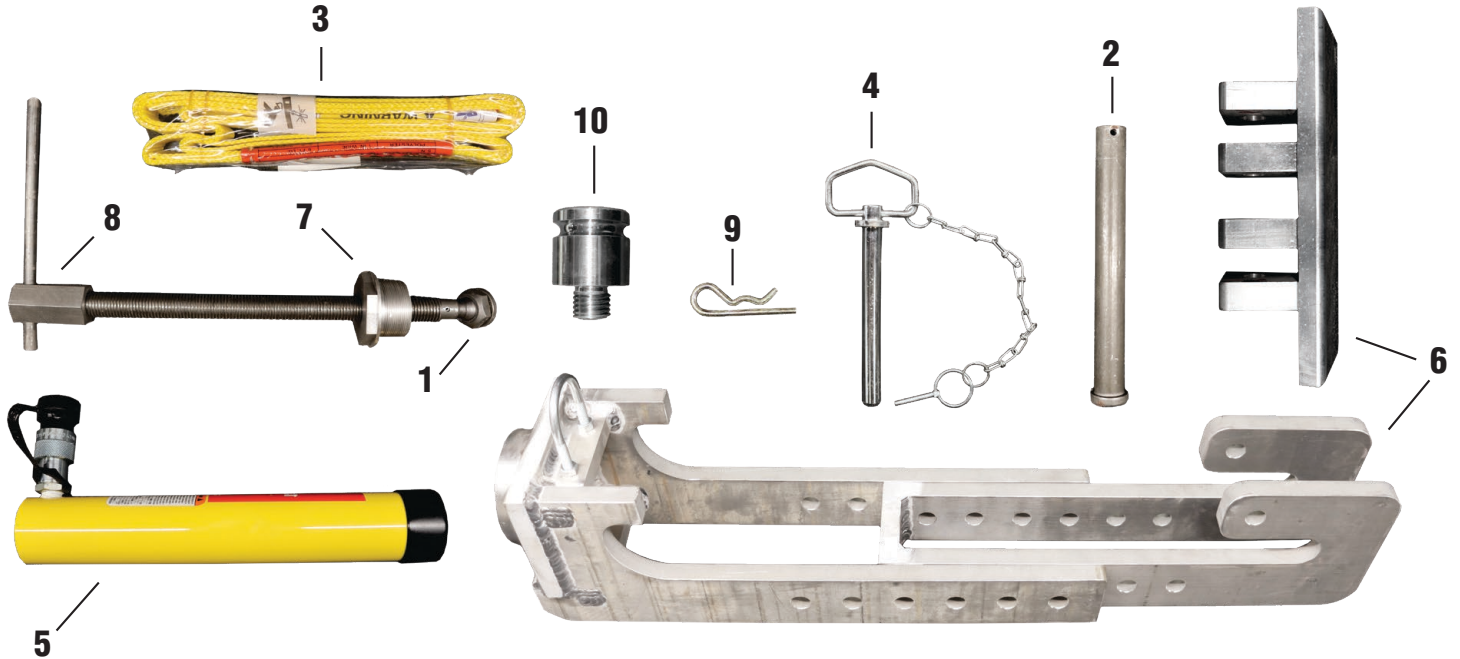
AME INTERNATIONAL

2347 Circuit Way, Brooksville, Florida USA 34604

Phone: (+1) 352.799.1111 • Toll Free (+1) 877.755.4AME (4263)

Fax: (+1) 352.799.1111 • E-mail: sales@ameintl.net

Parts Breakdown



ITEM	PRODUCT NO.	DESCRIPTION	QTY
1	11950-001	BESSEY MORPAD	1
2	11950-002	CLEVIS PIN	2
3	11950-003	STRAP FOR BSB-ISNT	1
4	11950-004	HITCH PIN W/C 3/4" x 7" W/ LINCH PIN	4
5	13050	10" HYDRAULIC CYLINDER	1
6	11950-006	FRAME	2
7	11950-007	ADAPTER NUT FOR HAND SCREW	1
8	11950-008	MANUAL SCREW T-HANDLE	1
9	11950-009	STAINLESS STEEL COTTER PIN 2-1/2"	2
10	A-12	SMOOTH SADDLE 2"	1