

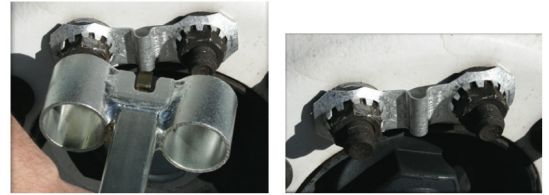


BUDD NUT WRENCHES & ROLLOCKS

62000 62500 63000 63010

Rollocks

- Cost effective way to prevent wheel nuts from loosening
- Galvanized steel product locks wheel nuts in place
- ROLLOCK is for use on 19.5 & 22.5 Hub-Piloted Wheels (8 or 10 hole)
- ROLLOCK is easy to remove: Unscrew the wheel nut in normal manner and the ROLLOCK clamp will easily come off

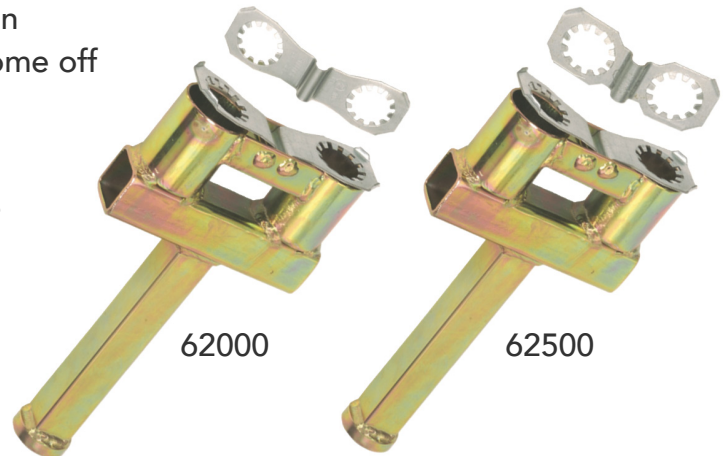


62000 - Rollock, 4 1/8" Spacing

- Rollock, 4 1/8" spacing, 30-33mm nut
- Application: 22.5", 10 hole 335mm B.C., 19.5", 8 hole 275mm B.C.
- Installation Tool: 62050

62500 - Rollock, 3 1/2" Spacing

- Rollock, 3 1/2" spacing, 30-33mm nut
- Application: 22.5", 10 hole 285.75mm B.C.
- Installation Tool: 62550



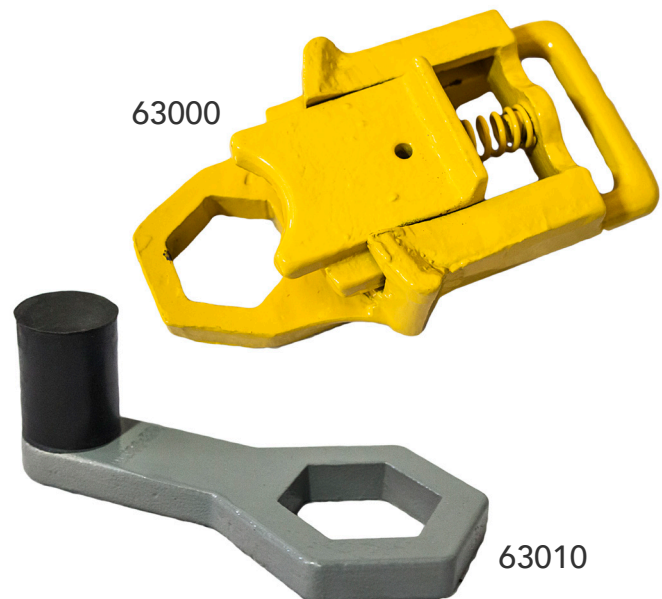
Budd Nut Wrenches

63000 - Budd Nut Wrench Deluxe

- Frozen inner/outer nuts can be loosened while on the vehicle
- Locks into place during removal of cap nuts
- Allows for maximum torque of impact wrench
- Fits 1-1/2" (38 mm) wheel nuts

63010 - 1-1/2" (38MM) Budd Nut Wrench

- Will not damage aluminum wheels
- Holds the outer nut securely on dual wheels
- Replaceable polymer head part number 63010-001



2347 Circuit Way
Brooksville, FL 34604
352.799.1111 - sales@ameintl.net

