



37330 HUB BUDDY

Impact Rated Lug / Disc Surface Cleaner

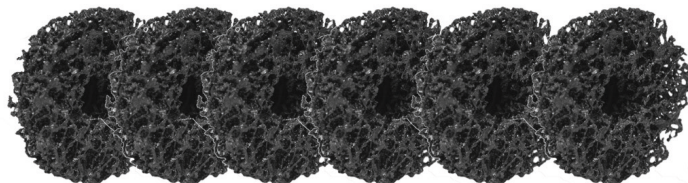
- Impact rated - no need to change tools
- Comply with best practice **R.I.S.T.** procedure.
- Removes rust, corrosion and other build-up from wheel stud, drums and tire rim
- Helps proper torque of lug nuts by removing corrosion
- A must for easy and accurate tire balancing
- Includes: 1 Hub Buddy attachment and 1 cleaning disc head
- Replacement cleaning discs available in packs of 6 (Product # 37335)



*Impact wrench not included



1/2" Drive Socket



37335 - 6 Pack Cleaning Discs

TIRE INDUSTRY ASSOCIATION
R.I.S.T.
PROCEEDURE

R - Remove debris from mating surfaces.
I - Inspect components.
S - Snug lug nuts in a star pattern.
T - Torque lug nuts to specification.

2347 Circuit Way
 Brooksville, FL 34604
 352.799.1111 - sales@ameintl.net





37330 HUB BUDDY

Hub Buddy Impact Driven Lug / Hub Surface Cleaner Instructions



1. Lift the vehicle with jack in preparation to remove the tire. Secure the vehicle with stands or other approved equipment.



2. Remove lug nuts off wheel with impact wrench, normally.



3. Remove the socket from the impact wrench and replace with the 37330 Hub Buddy.



4. After the 37330 Hub Buddy is affixed securely make sure impact wrench is spinning in a clock-wise motion to insure that the disc remains secure during operation.



5. Place the 37330 Hub Buddy over a wheel mounting stud and engage impact wrench to clean away corrosion and rust from the hub. Repeat process for the other wheel mounting studs. **Be sure to change the cleaning disc when worn with part # 37335—6 Pack Cleaning Discs.**



6. Once process is completed for all wheel mounting studs, remove the 37330 Hub Buddy attachment from impact wrench and replace with the socket. Place wheel and tire on hub and affix all lug nuts and process is complete.

2347 Circuit Way
Brooksville, FL 34604
352.799.1111 - sales@ameintl.net

