



INSTRUCTION MANUAL & PARTS BREAKDOWN



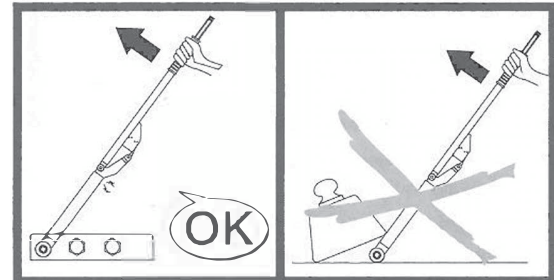
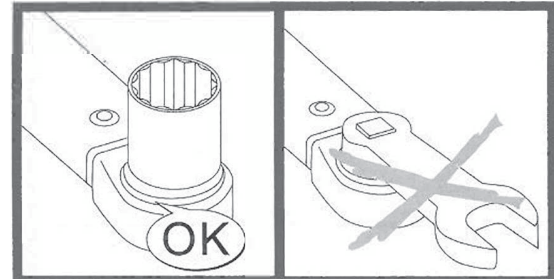
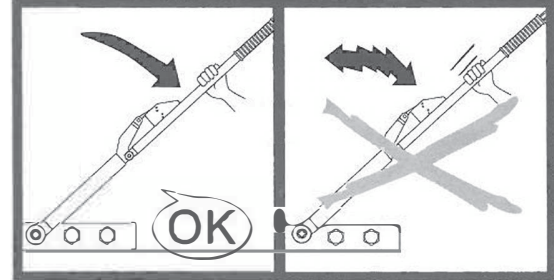
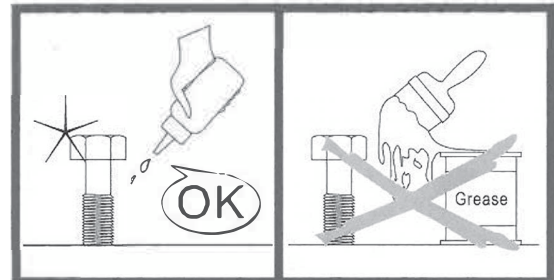
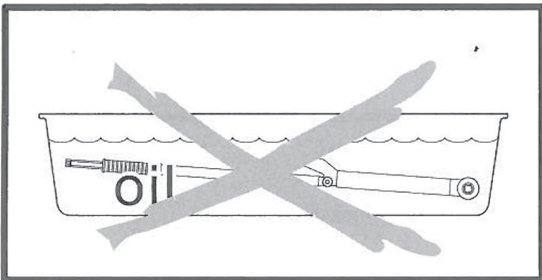
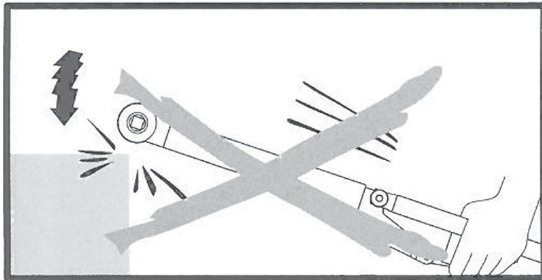
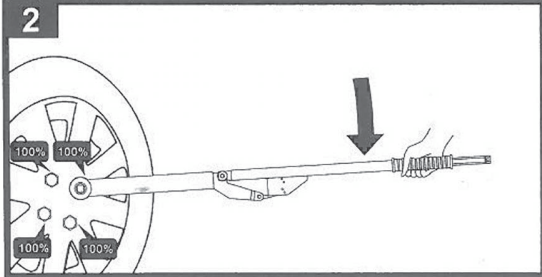
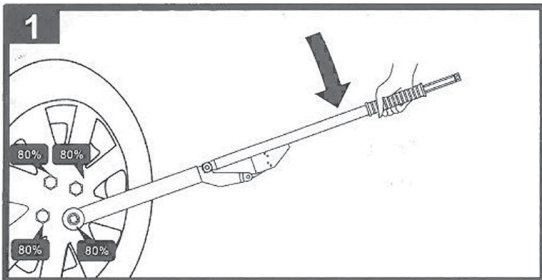
Model 67125

Break Back Torque Wrench,
600 ft/ lbs, 3/4" Drive

2347 Circuit Way, Brooksville, Florida, USA 34604
Phone: (+1) 352-799-1111 Toll Phone: (+1) 877-775-4AME (4263)
Fax: (+1) 352-799-1112 E-mail: sales@ameintl.net www.ameintl.net

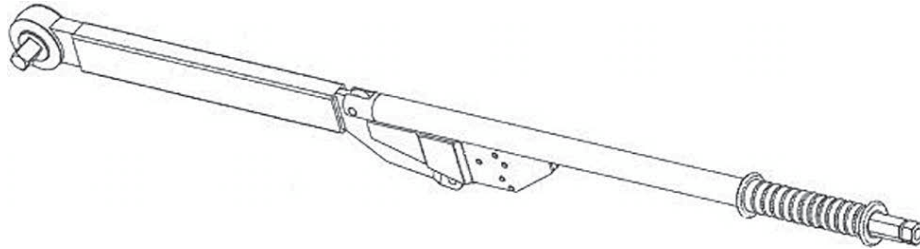


INSTRUCTION MANUAL & PARTS BREAKDOWN





INSTRUCTION MANUAL & PARTS BREAKDOWN



- ↻ Increase Value(+)
- ↺ Decrease Value(+)

- Turn nut to adjust torque value
- Girar la tuerca para ajustar el valor del torque

! Accuracy lost

- Do not remove adjusting nut, calibration will be lost
- No retire la tuerca de ajuste, se perderia la calibration

250ft.lb

e.g.

350ft.lb

View Point

- Adjust torque value to reading on the scale aligned with the end of the body tube.
- Ajustar el valor de torsión a la lectura en la escala alineada con el extremo del tubo del cuerpo.

A

OK

B

OK

- Always work using the centre of the handle to apply the correct torque
- Siempre trabaje usando el centro del mango para aplicar el par de apriete correcto

oil

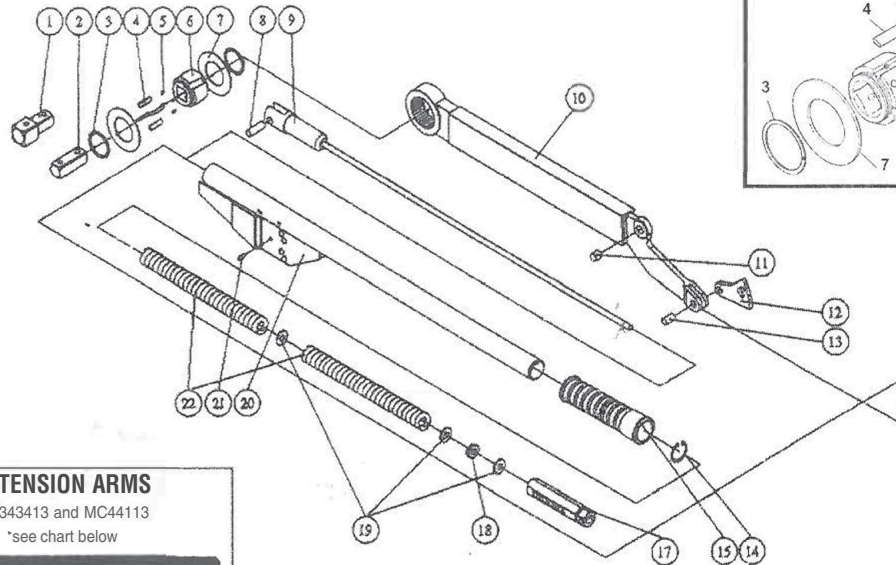
oil

oil

- Lubrication points
- Puntos de lubricacion



INSTRUCTION MANUAL & PARTS BREAKDOWN



EXTENSION ARMS
MC343413 and MC44113
*see chart below

ITEM#	DESCRIPTION	Quantity
1	3/4"x1" drive	1
2	3/4"x3/4" drive	1
3	C-Ring	2
4	Pawl	4
5	Pawl Spring	4
6	Driver	1
7	Lid	2
	head set	
8	Pluger Threads PIN	1
9	Pluger Threads	1
10	Ratchet Body	1
Kit 11	Bearing	1
12	brake Pad	1
13	brake Pad PIN	1
14	G Buckle	1
15	handle	1
17	Adjusting Nut	1
18	bushing	1
19	washer	3
20	Steel Tube Kit	
21	PIN	
22	Spring	2
	Male/fviale Extension Arm · 3/4"x 3/4"x 13"	1
	Male/Male Extension Arm· 3/4"x 1" x 13"	1



INSTRUCTION MANUAL & PARTS BREAKDOWN

Certificate of Calibration

Model: TM 600

Serial No.: 130401005

Maximum Capacity: 600

Units: lbf.ft

Insepector: G

Ambient Temperature: 25°C

Set Torque	Min	Max	Actual Readings		
150	147	153	151.4	149.1	147.7
350	340	360	353.3	340.3	358
600	590	618	594.4	606.9	595.9

The limits shown and the test equipment used for this calibration comply with the requirements of: ISO 6789

The permissable variation is +/- 4% of reading

The test equipment used in the performance of the above calibration has international traceability and compliant with ISO 17025.

Tester Model: PRO TEST - 1500

Serial No.: 64429

Certificate No: 138674

KABO Tool Company

Date of Calibration

2013.05.03

Quality iManager

Jacktsai